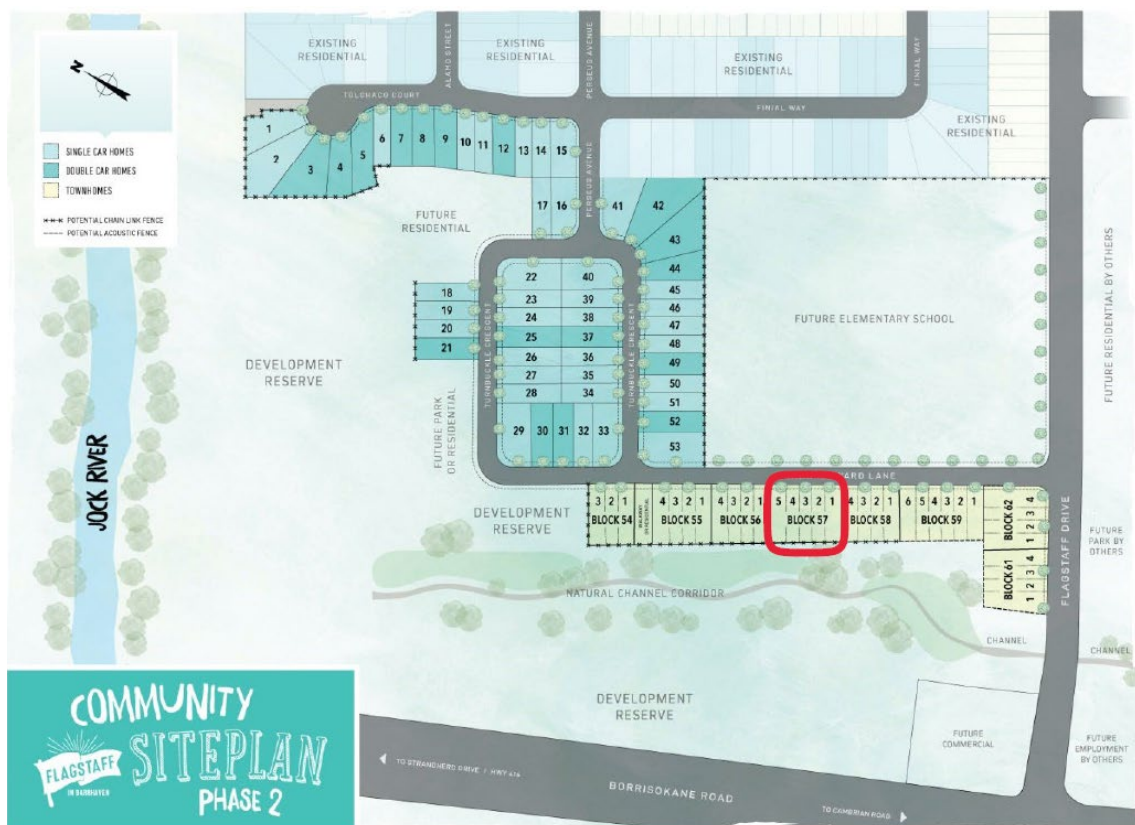


TOWNHOME READY BUILT

The Elm Interior C

Block 57.003



Despite the best efforts of Glenview Homes and its affiliates, officers, directors, employees or agents (collectively "we", "us" or "our" as circumstances warrant) to provide accurate information, including but not limited to prices and availability of homes or lots, it is regrettably not possible to ensure that all information contained in this display is correct. We do not warrant the accuracy and completeness of information, text, graphics or items contained in this display. All dimensions provided are approximate and sizes and specifications are subject to change without notice. E.&O.E. THIS DISPLAY IS PROVIDED 'AS IS' WITHOUT WARRANTY OF ANY KIND, EITHER EXPRESSED OR IMPLIED, WARRANTIES OF MERCHANTABILITY, FITNESS FOR A PARTICULAR PURPOSE, OR NON-INFRINGEMENT. The information and specifications contained in this display are subject to change without notice and represent no commitment on our part in the future.



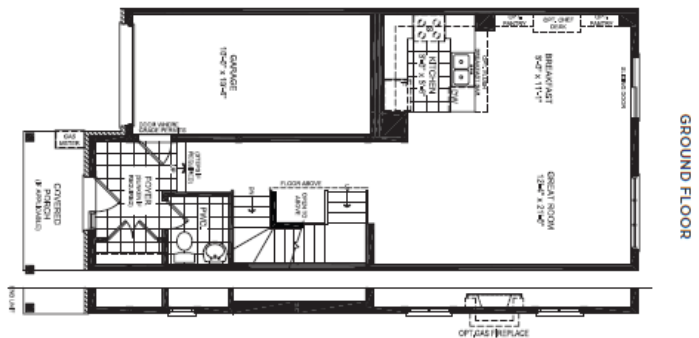
THE ELM

TOWNHOME COLLECTION
TOWNHOME (INTERIOR OR END UNIT) | 1,978 TO 2,030 SQ. FT.

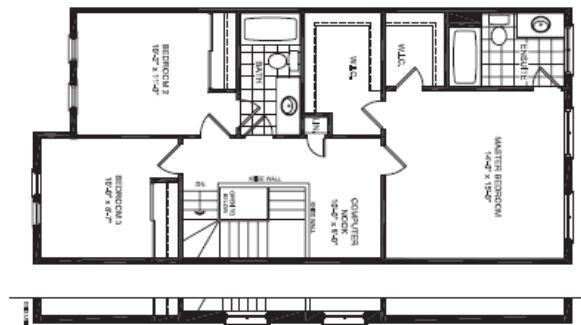
3/4 2.5



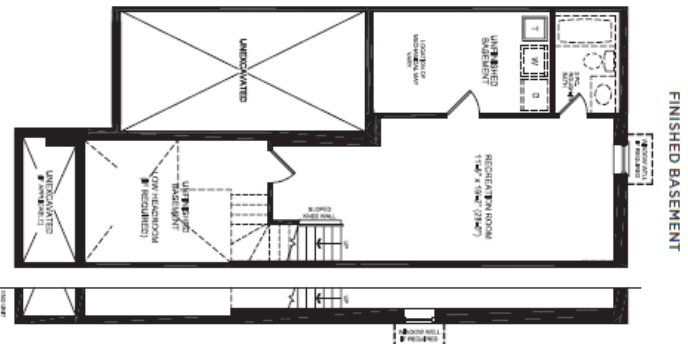
FLOORPLANS



GROUND FLOOR



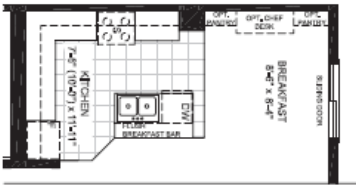
SECOND FLOOR



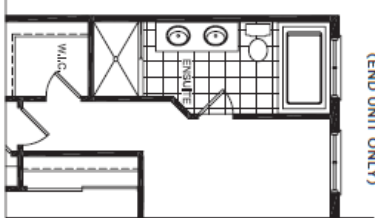
FINISHED BASEMENT

DESIGNER OPTIONS

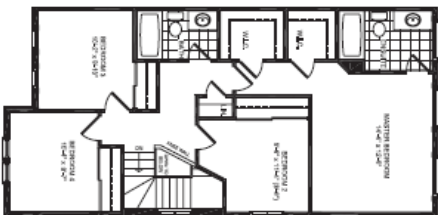
GOURMET KITCHEN



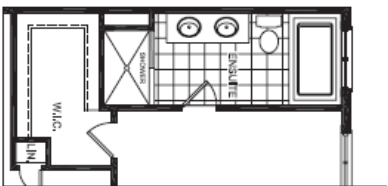
EXECUTIVE ENSUITE W/ 4 BEDROOM (END UNIT ONLY)



4 BEDROOM PLAN (AVAILABLE W/ END UNIT ONLY)



EXECUTIVE ENSUITE



SECOND FLOOR LAUNDRY (AVAILABLE W/ 3 BEDROOM PLAN ONLY)



Despite the best efforts of Glenview Homes and its affiliates, officers, directors, employees or agents (collectively "we," "us" or "our" as circumstances warrant) to provide accurate information, including but not limited to prices and availability of homes or lots, it is regrettably not possible to ensure that all information contained in this display is correct. We do not warrant the accuracy and completeness of information, text, graphics or items contained in this display.

All dimensions provided are approximate and sizes and specifications are subject to change without notice. The floor plans and room dimensions shown apply to Glenview, N. of this model type. Illustrations are artist's conceptions only. Actual usable floor space varies from indicated floor areas. Square footages include finished space in the basement (E.A.C.E. THIS DISPLAY IS PROVIDED "AS IS" WITHOUT WARRANTY OF ANY KIND, EITHER EXPRESSED OR IMPLIED, WARRANTIES OF MERCHANTABILITY, FITNESS FOR A PARTICULAR PURPOSE, OR NON-INFRINGEMENT. The information and specifications contained in this display are subject to change without notice and represent no commitment on our part in the future. All products and services are provided subject to applicable laws and accompanying terms and conditions.

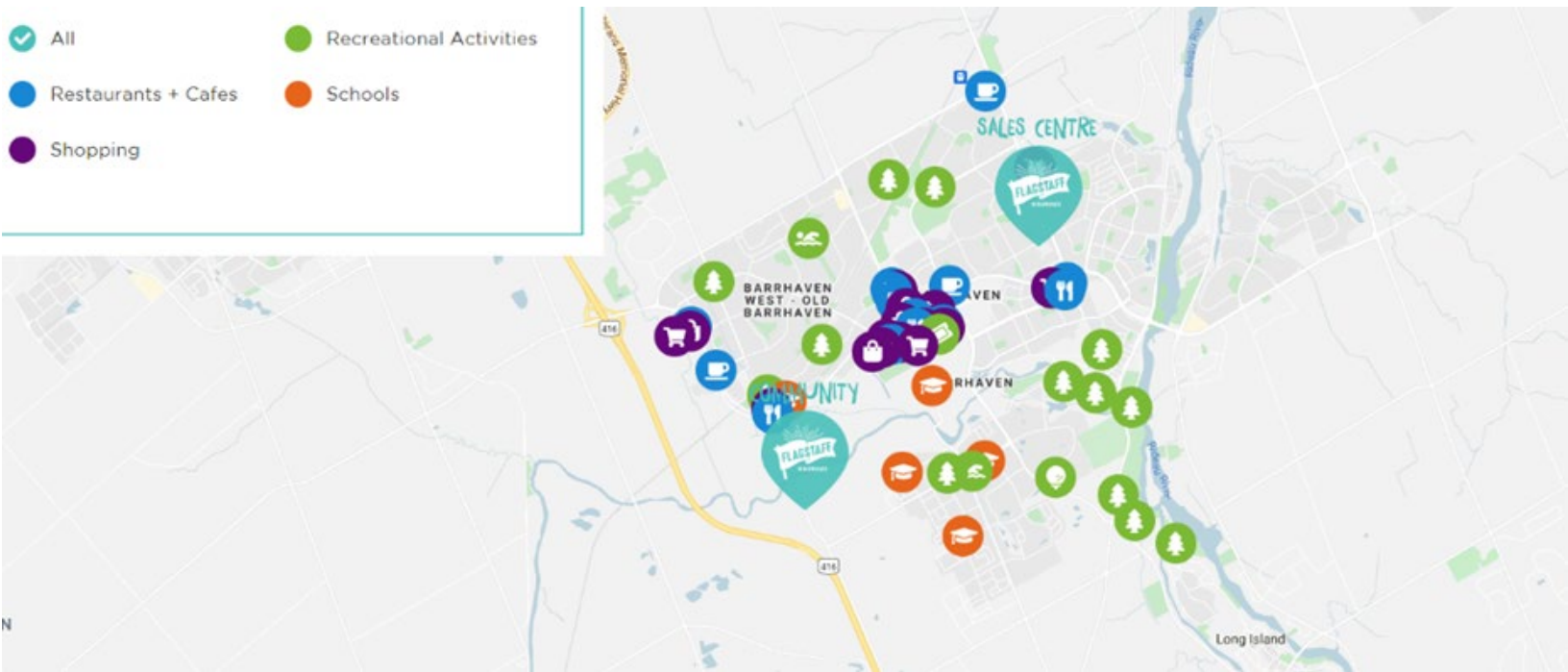
Despite the best efforts of Glenview Homes and its affiliates, officers, directors, employees or agents (collectively "we," "us" or "our" as circumstances warrant) to provide accurate information, including but not limited to prices and availability of homes or lots, it is regrettably not possible to ensure that all information contained in this display is correct. We do not warrant the accuracy and completeness of information, text, graphics or items contained in this display. All dimensions provided are approximate and sizes and specifications are subject to change without notice. E.&O.E. THIS DISPLAY IS PROVIDED "AS IS" WITHOUT WARRANTY OF ANY KIND, EITHER EXPRESSED OR IMPLIED, WARRANTIES OF MERCHANTABILITY, FITNESS FOR A PARTICULAR PURPOSE, OR NON-INFRINGEMENT. The information and specifications contained in this display are subject to change without notice and represent no commitment on our part in the future.



FEEL RIGHT AT HOME

If life is the journey, then home is the destination. Come find your perfect new home right here at Flagstaff in Barrhaven. A place where you can hang your hat and rest your head. Where life's memories scatter themselves across your home. From the bustling family room to the tranquil master retreat, you'll find spaces and places that will make every moment feel like home. Retreat to this sensational collection of homes nestled right where you want to be – in the highly sought-after community of Barrhaven. You'll discover a life rich in everyday adventures.

- ✔ All
- Restaurants + Cafes
- Shopping
- Recreational Activities
- Schools



INTERIOR FINISHES

GOURMET KITCHEN LAYOUT - Extended cabinetry and island, 39" upper cabinetry, tile backsplash.

RAILING- Standard Rail 5150 Oak (contemporary rail, 3" modern plain newel (break edge), 1 1/4" square modern spindles)

PAINT- Benjamin Moore Decorators White OC-149

CARPET- Beaulieu spartacus overcast

HARDWOOD FLOOR - Mirage Builder Red Oak 3 1/4". Stain Selection: Platinum Cashmere

KITCHEN FINISHES & DESCRIPTION

Stainless Steel 30" Microwave/Hood Combo. Whirlpool Model YWMH31017HS

Upgraded add slim led 4 potlights

CABINETRY - Kitchen Cabinetry Level 1 - Shaker Door - Dove Grey. Add 3 Door Bank of Drawers in lieu of Base Cabinet

DOOR / DRAWERS HARDWARE: Stainless Steel - S26

COUNTERTOP- Quartz - Zenith - Z1542 White Pearl

BACKSPLASH - Cerasec Essential Series 4x8 - snow white grout, brick install - Tile Selection: Essential - Bianco - Glossy

KITCHEN FLOOR - Mirage Builder Red Oak 3 1/4". Stain Selection: Platinum Cashmere

Fridge waterline

MASTER ENSUITE

SPA SHOWER - 3 ceramic walls and glass shower door and panel.
Door Size: 24" x 72" Glass Door w/ 36" x 96" Glass Panel

COUNTERTOP - UPD Quartz Zenith - Colour Selection: Z1542 White Pearl

CABINET - Door Style & Finish: Spectra

FLOORING - Construct 12x12 Light Grey

WALL TILE - Olympia Construct 8x12. Tile Selection: Construct 8x12 Glossy Light Grey

snow white grout, horizontal stacked. Colour Selection: Bianco

HARDWARE - Matte Black - S39

MAIN BATH

CABINET - Door Style & Finish: Spectra

COUNTERTOP - Laminate- Colour Selection: 6698-46 Formica Paloma Polar

FLOOR - Construct 12x12 Light Grey

WALL TILE - Olympia Construct 8x12. Tile Selection: Construct 8x12 Glossy Light Grey

HARDWARE - Matte Black - S39

FOYER/ POWDER ROOM

FLOORING - Cerasec Capri 13x13 - Tile Selection: White 17533