

TOWNHOME READY BUILT

The Willow End C

Block 57.005



Despite the best efforts of Glenview Homes and its affiliates, officers, directors, employees or agents (collectively “we”, “us” or “our” as circumstances warrant) to provide accurate information, including but not limited to prices and availability of homes or lots, it is regrettably not possible to ensure that all information contained in this display is correct. We do not warrant the accuracy and completeness of information, text, graphics or items contained in this display. All dimensions provided are approximate and sizes and specifications are subject to change without notice. E.&O.E. THIS DISPLAY IS PROVIDED ‘AS IS’ WITHOUT WARRANTY OF ANY KIND, EITHER EXPRESSED OR IMPLIED, WARRANTIES OF MERCHANTABILITY, FITNESS FOR A PARTICULAR PURPOSE, OR NON-INFRINGEMENT. The information and specifications contained in this display are subject to change without notice and represent no commitment on our part in the future.



THE WILLOW END

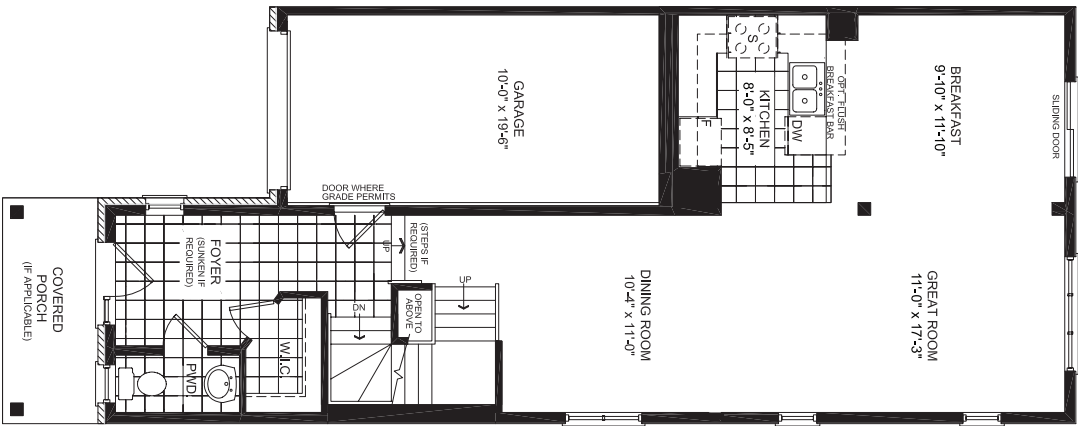
TOWNHOME COLLECTION
TOWNHOME (INTERIOR END UNIT) | 2,254 SQ. FT.

4 2.5

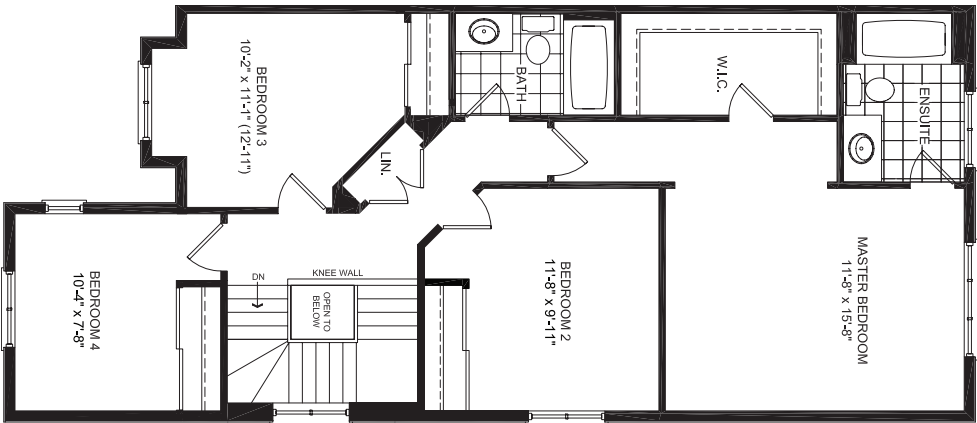


FLOORPLANS

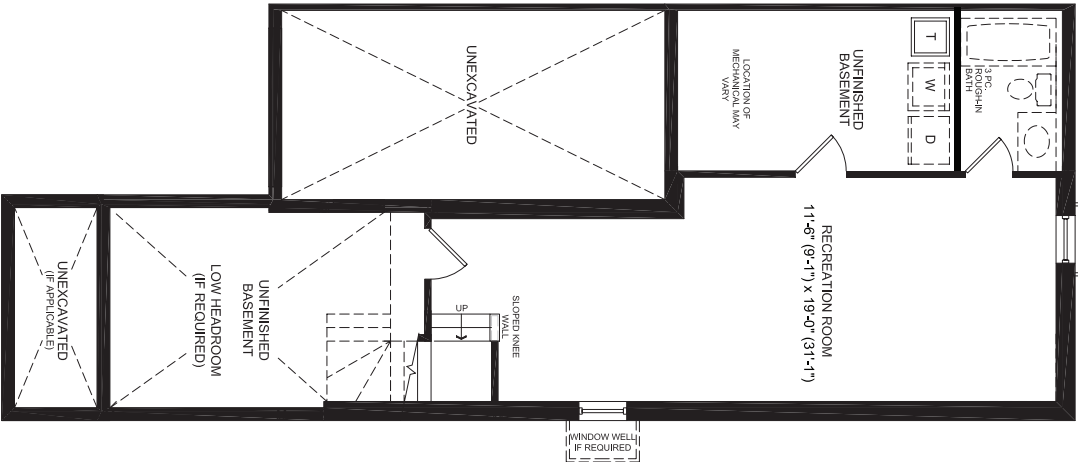
GROUND FLOOR



SECOND FLOOR

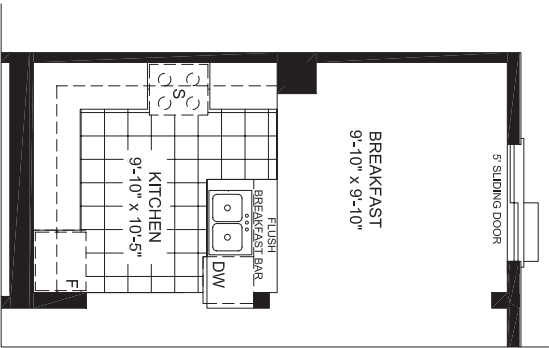


FINISHED BASEMENT



DESIGNER OPTIONS

GOURMET KITCHEN



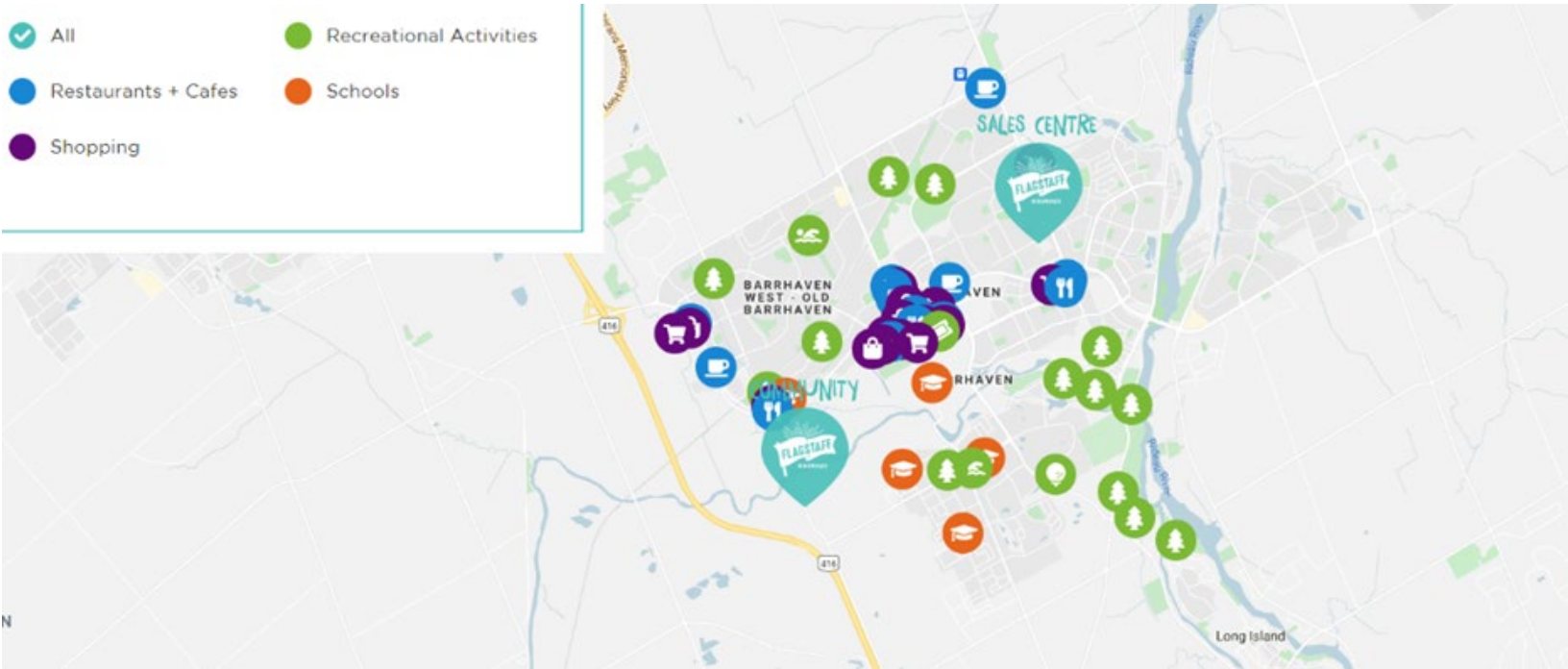
Despite the best efforts of Glenview Homes and its affiliates, officers, directors, employees or agents (collectively "we", "us" or "our" as circumstances warrant) to provide accurate information, including but not limited to prices and availability of homes or lots, it is regrettably not possible to ensure that all information contained in this display is correct. We do not warrant the accuracy and completeness of information, text, graphics or items contained in this display.

All dimensions provided are approximate and sizes and specifications are subject to change without notice. The floor plans and room dimensions shown apply to Elevation 'A' of this model type. Illustrations are artist's concepts only. Actual usable floor space varies from indicated floor areas. Square footages include finished space in the basement E.&O.E. THIS DISPLAY IS PROVIDED "AS IS" WITHOUT WARRANTY OF ANY KIND, EITHER EXPRESSED OR IMPLIED. WARRANTIES OF MERCHANTABILITY, FITNESS FOR A PARTICULAR PURPOSE, OR NON-INFRINGEMENT. The information and specifications contained in this display are subject to change without notice and represent no commitment on our part in the future. All products and services are provided subject to applicable taxes and accompanying terms and conditions.



FEEL RIGHT AT HOME

If life is the journey, then home is the destination. Come find your perfect new home right here at Flagstaff in Barrhaven. A place where you can hang your hat and rest your head. Where life’s memories scatter themselves across your home. From the bustling family room to the tranquil master retreat, you ’ll find spaces and places that will make every moment feel like home. Retreat to this sensational collection of homes nestled right where you want to be – in the highly sought-after community of Barrhaven. You ’ll discover a life rich in everyday adventures.



INTERIOR FINISHES

GOURMET KITCHEN LAYOUT - Extended cabinetry and island, 39" upper cabinetry, tile backsplash.

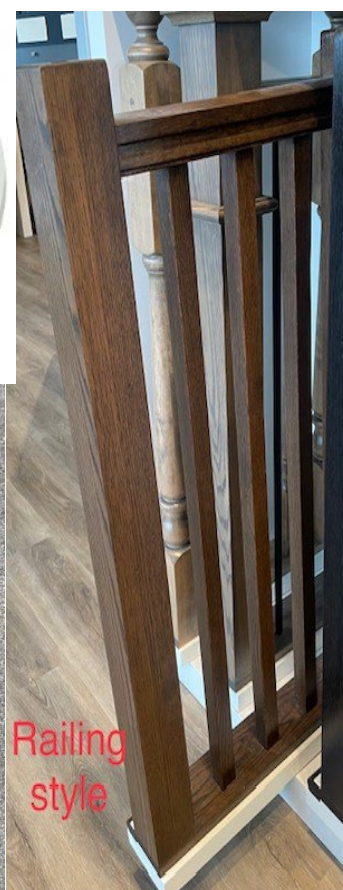
RAILING- Standard Rail 5150 Oak (contemporary rail, 3" modern plain newel (break edge), 1 1/4" square modern spindles)

PAINT- Benjamin Moore Paper White OC-55

CARPET- Beaulieu Spartacus Overcast

HARDWOOD FLOOR Upgrade to Level 5 - Admiration Tru-Balance Red Oak 5" brushed. Stain Selection: Rio

TRIM - Metro Trim Package includes choice of upgraded door and modern style trim. Door Style: Lincoln. Upgrade all Bedroom Sliders to Bypass Doors



KITCHEN FINISHES & DESCRIPTION

Stainless Steel 30" Microwave/Hood Combo. Whirlpool Model YWMH31017HS

Upgraded slim led 4 pot-lights

CABINETRY - Kitchen Cabinetry Level 1 - Shaker Door - White. Add 3 Door Bank of Drawers in lieu of Base Cabinet

FAUCET - Delta trinsic matte black

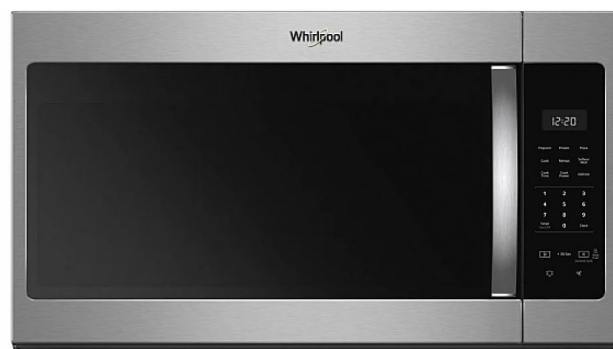
DOOR / DRAWERS HARDWARE: Matte Black - S22; drawers S30 matte black.

COUNTERTOP- Quartz - Zenith - Z1730 Carrara Cassa

BACKSPLASH - Olympia C&D 3"x6" - horizontal brick install, snow white grout- Tile Selection: Silver Grey Bright

KITCHEN FLOOR - Upgrade to Level 5 - Admiration Tru-Balance Red Oak 5" brushed. Stain Selection: Rio

Fridge waterline



Despite the best efforts of Glenview Homes and its affiliates, officers, directors, employees or agents (collectively "we", "us" or "our" as circumstances warrant) to provide accurate information, including but not limited to prices and availability of homes or lots, it is regrettably not possible to ensure that all information contained in this display is correct. We do not warrant the accuracy and completeness of information, text, graphics or items contained in this display. All dimensions provided are approximate and sizes and specifications are subject to change without notice. E.&O.E. THIS DISPLAY IS PROVIDED 'AS IS' WITHOUT WARRANTY OF ANY KIND, EITHER EXPRESSED OR IMPLIED, WARRANTIES OF MERCHANTABILITY, FITNESS FOR A PARTICULAR PURPOSE, OR NON-INFRINGEMENT. The information and specifications contained in this display are subject to change without notice and represent no commitment on our part in the future.

MASTER ENSUITE

COUNTERTOP - UPD Quartz Zenith - Colour Selection: Z1542 White Pearl

CABINET - Door Style & Finish: Cognac Monument

FLOORING - Construct 12x12 White

WALL TILE - Olympia Construct 8x12. Tile Selection: Construct 8x12, snow white grout, horizontal stacked. Glossy White

HARDWARE - Matte Black - S39



MAIN BATH

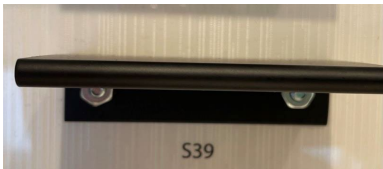
CABINET - Door Style & Finish: Cognac Monument

COUNTERTOP - UPD Quartz Zenith - Colour Selection: Z1542 White Pearl

FLOOR - Construct 12x12 White

WALL TILE - Olympia Construct 8x12. snow white grout, horizontal stacked, Glossy White

HARDWARE - Matte Black - S39



FOYER/ POWDER ROOM

FLOORING - Euro Pasha Davenport 13x13, bone grout.
Tile Selection: Ash 941

