

THE HILLCREST E

\$1,099,990



Designer Finished Home

2,345 SQ. FT - LOT 0004a - PREMIUM LOT

Designed for big and busy families, this home combines space with stylish and functional details. Enjoy the open-concept floorplan that includes a large kitchen island for family gatherings along with a spacious great room and upscale fireplace. The second floor boasts four spacious bedrooms plus a loft that offers additional space for your growing family.



THE HILLCREST

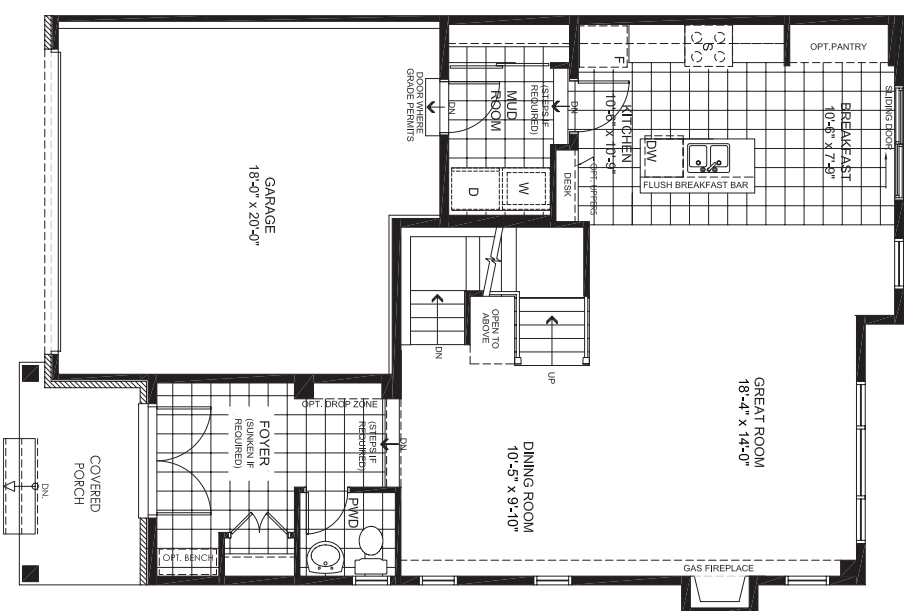
DOUBLE-CAR GARAGE COLLECTION
SINGLE | 2,345 SQ. FT.

4 2.5

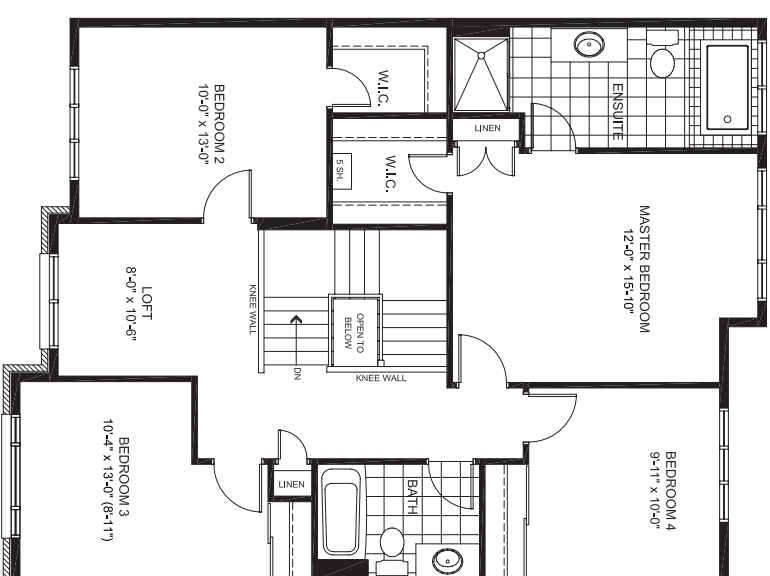


FLOORPLANS

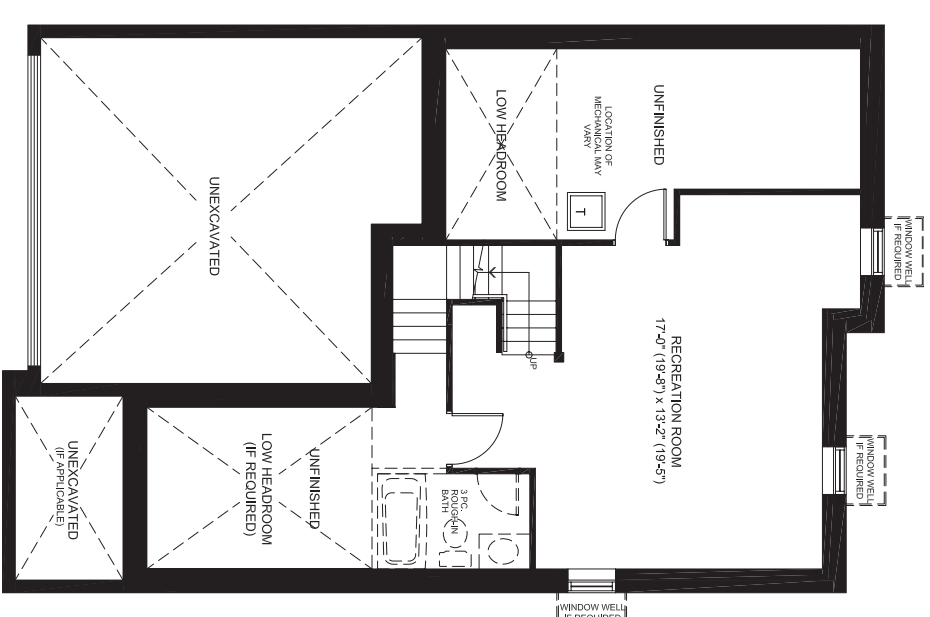
GROUND FLOOR



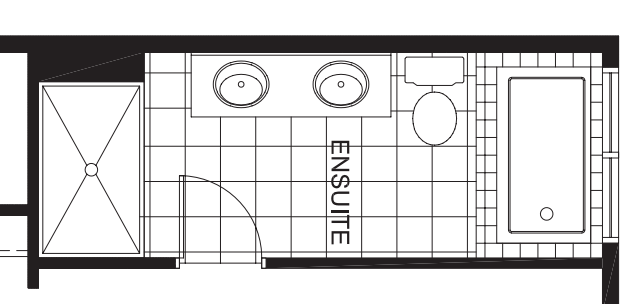
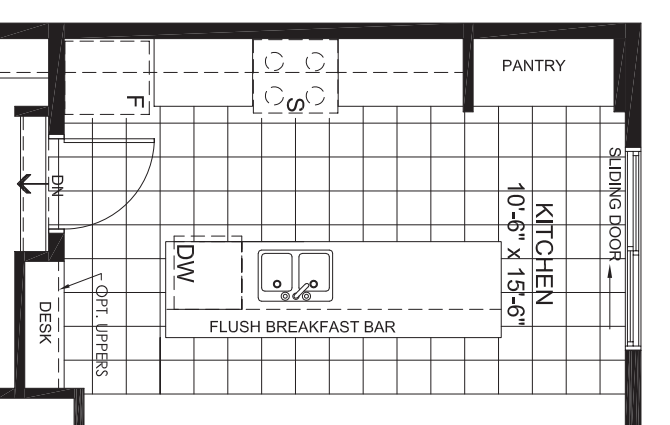
SECOND FLOOR



FINISHED BASEMENT



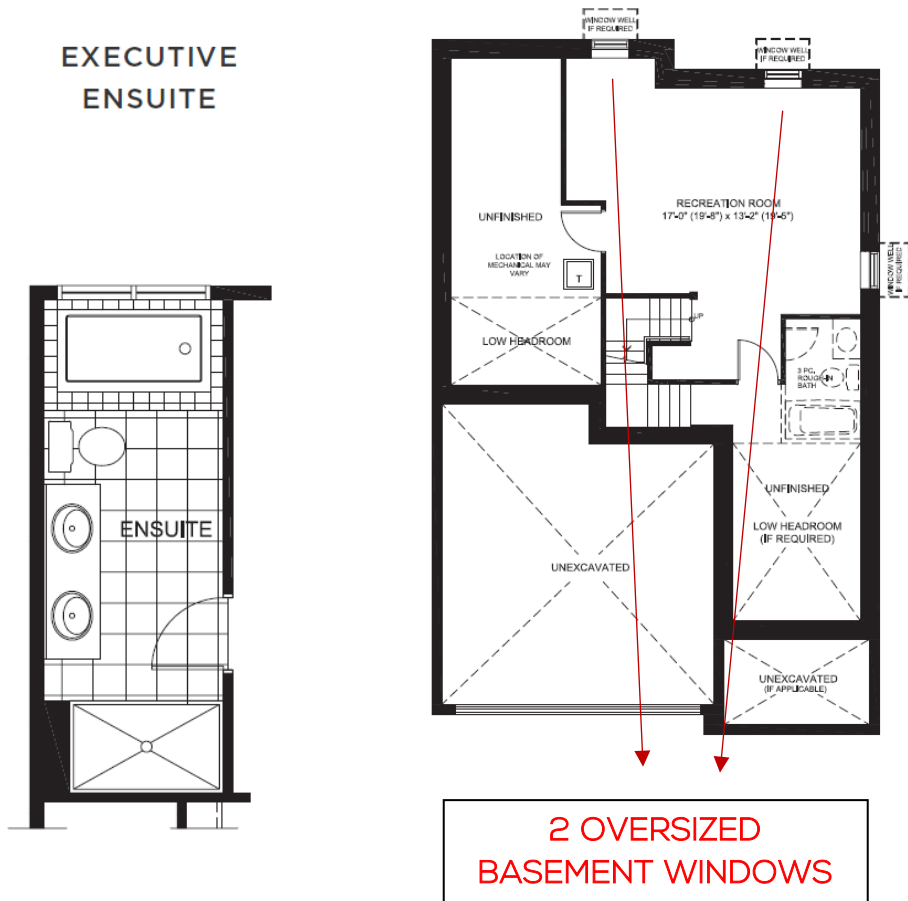
DESIGNER OPTIONS



Despite the best efforts of Glenview Homes and its affiliates, officers, directors, employees or agents (collectively "we", "us" or "our" as circumstances warrant) to provide accurate information, including but not limited to prices and availability of homes or lots, it is regrettably not possible to ensure that all information contained in this display is correct. We do not warrant the accuracy and completeness of information, text, graphics or items contained in this display.

All dimensions provided are approximate and sizes and specifications are subject to change without notice. The floor plans and room dimensions shown apply to Elevation 'A' of this model type. Illustrations are artist's concepts only. Actual usable floor space varies from indicated floor areas. Square footages include finished space in the basement (E.&O.E. THIS DISPLAY IS PROVIDED AS IS WITHOUT WARRANTY OF ANY KIND, EITHER EXPRESSED OR IMPLIED, WARRANTIES OF MERCHANTABILITY, FITNESS FOR A PARTICULAR PURPOSE, OR NON-INFRINGEMENT). The information and specifications contained in this display are subject to change without notice and represent no commitment on our part in the future. All products and services are provided subject to applicable taxes and accompanying terms and conditions.

STRUCTURAL OPTIONS

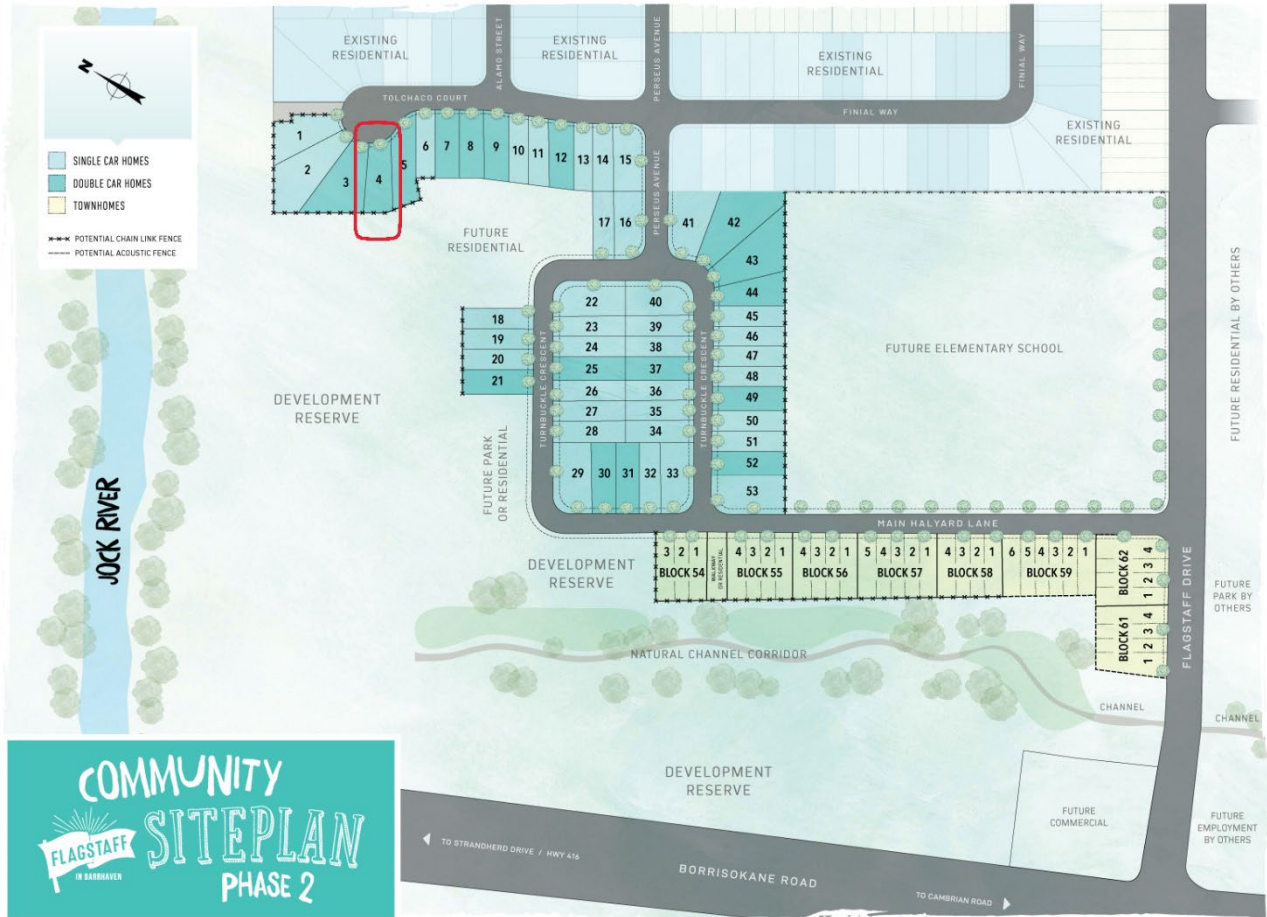


**FEEL RIGHT
AT HOME**

If life is the journey, then home is the destination. Come find your perfect new home right here at Flagstaff in Barrhaven. A place where you can hang your hat and rest your head. Where life's memories scatter themselves across your home. From the bustling family room to the tranquil master retreat, you'll find spaces and places that will make every moment feel like home. Retreat to this sensational collection of homes nestled right where you want to be – in the highly sought-after community of Barrhaven. You'll discover a life rich in everyday adventures.

Despite the best efforts of Glenview Homes and its affiliates, officers, directors, employees or agents (collectively "we", "us" or "our" as circumstances warrant) to provide accurate information, including but not limited to prices and availability of homes or lots, it is regrettably not possible to ensure that all information contained in this display is correct. We do not warrant the accuracy and completeness of information, text, graphics or items contained in this display. All dimensions provided are approximate and sizes and specifications are subject to change without notice. E.&O.E. THIS DISPLAY IS PROVIDED 'AS IS' WITHOUT WARRANTY OF ANY KIND, EITHER EXPRESSED OR IMPLIED, WARRANTIES OF MERCHANTABILITY, FITNESS FOR A PARTICULAR PURPOSE, OR NON-INFRINGEMENT. The information and specifications contained in this display are subject to change without notice and represent no commitment on our part in the future.

LOT 0004a



EXTERIOR PACKAGE



FIREPLACE

A STATEMENT OF ARCHITECTURAL MODERN & ELEGANCE

FIREPLACE



Ceratec – Gatsby Tile in Cabaret

Decora plug 15 amp for future entertainment.

WOOD FIREPLACE MANTLE – OAK RIO STAIN

INTERIOR FINISHES



Benjamin Moore

Decorator's White OC-149



RAILING- Upgraded Rail 5310 Oak in RIO (contemporary rail, 3 1/2" plain landing newel, plain Linea Spindles).

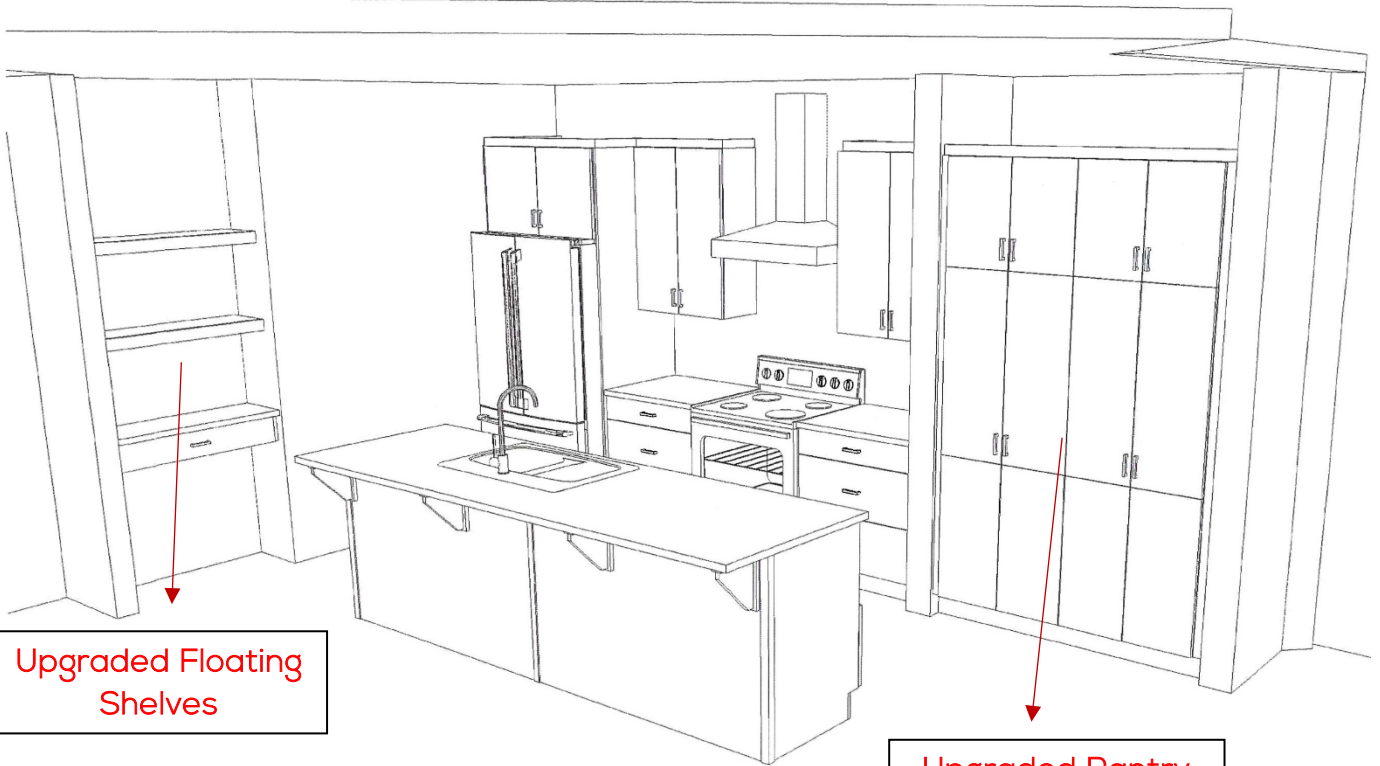
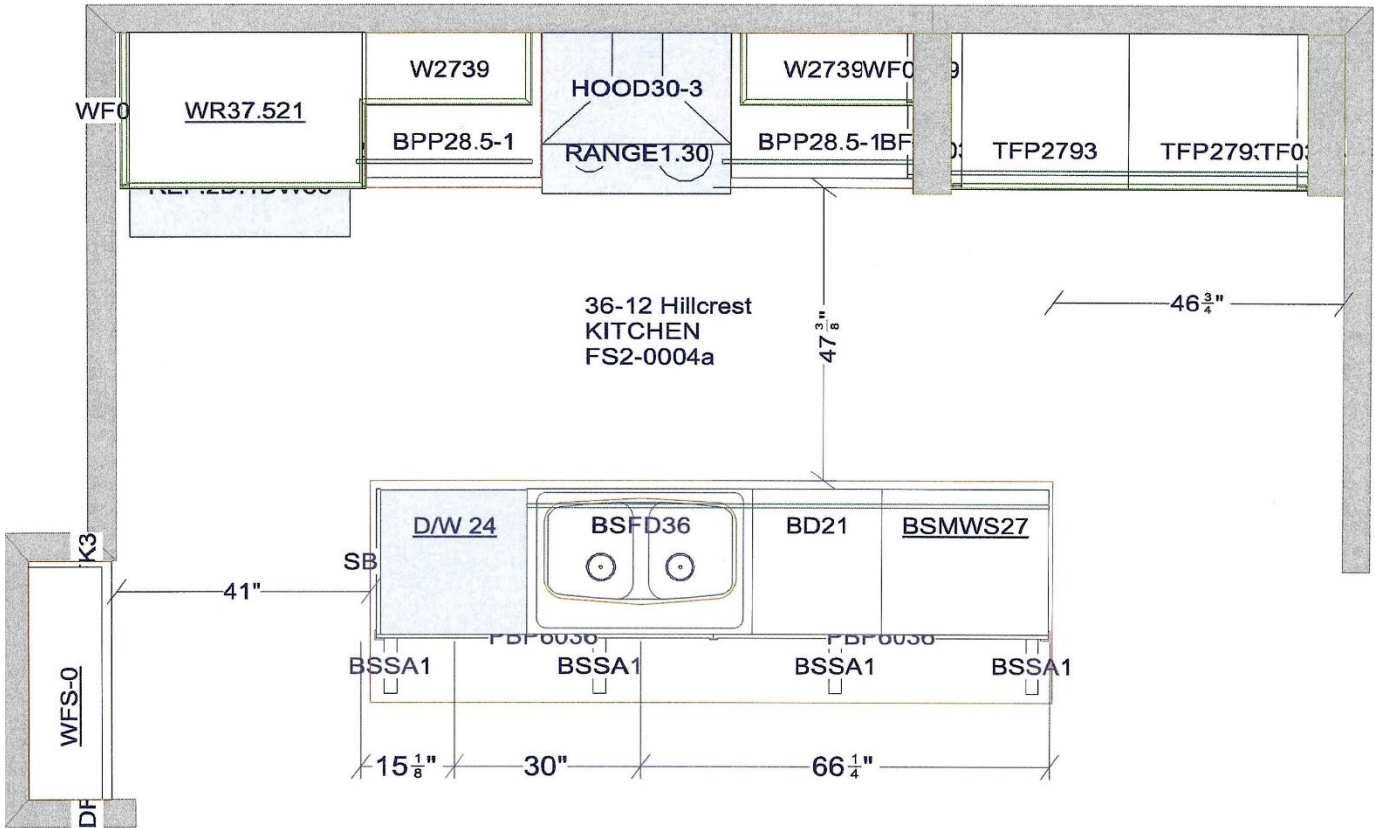
PAINT-Benjamin Moore Decorator's White CC-149 throughout the house

CARPET- Beaulieu Spartacus – Overcast

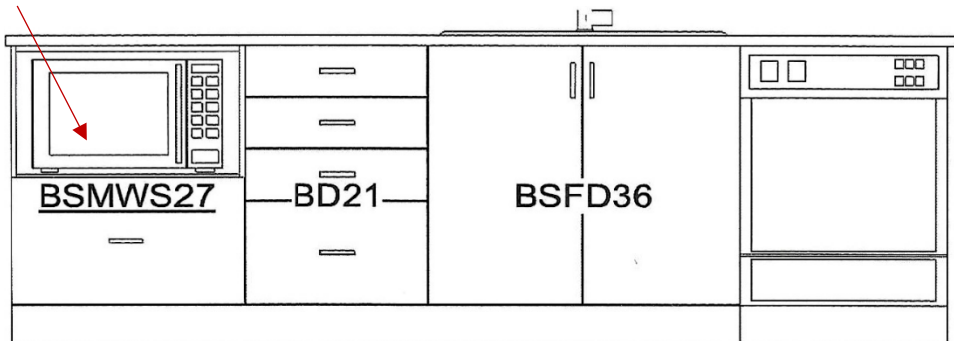
HARDWOOD FLOOR & MAIN STAIRCASE - Upgraded – Oak 3 1/4" Hardwood (Stain Selection – Rio Cashmere)

TRIM: Metro Trim Package includes choice of upgraded door and modern style trim. Door Style: Lincoln

KITCHEN LAYOUT



Upgraded



Despite the best efforts of Glenview Homes and its affiliates, officers, directors, employees or agents (collectively "we", "us" or "our") as circumstances warrant to provide accurate information, including but not limited to prices and availability of homes or lots, it is regrettably not possible to ensure that all information contained in this display is correct. We do not warrant the accuracy and completeness of information, text, graphics or items contained in this display. All dimensions provided are approximate and sizes and specifications are subject to change without notice. E.&O.E. THIS DISPLAY IS PROVIDED 'AS IS' WITHOUT WARRANTY OF ANY KIND, EITHER EXPRESSED OR IMPLIED, WARRANTIES OF MERCHANTABILITY, FITNESS FOR A PARTICULAR PURPOSE, OR NON-INFRINGEMENT. The information and specifications contained in this display are subject to change without notice and represent no commitment on our part in the future.

KITCHEN FINISHES & DESCRIPTION



Upgraded Stainless Steel 30" Chimney Hood Fan. Whirlpool Model WVV53UC0FS

CABINET - Brookfield (shaker) - MDF - Wellington White

DOOR / DRAWERS HARDWARE: 63096-1MBK (Matte Black)

COUNTERTOPS - Upgraded Zenith Quartz - White Pearl

BACKSPLASH - Essential - Greige (Herringbone) - Bone grout

KITCHEN FLOOR- Mirage Builder Oak 3 1/4" Hardwood - Rio Cashmere

Fridge waterline

MAIN BATHROOM



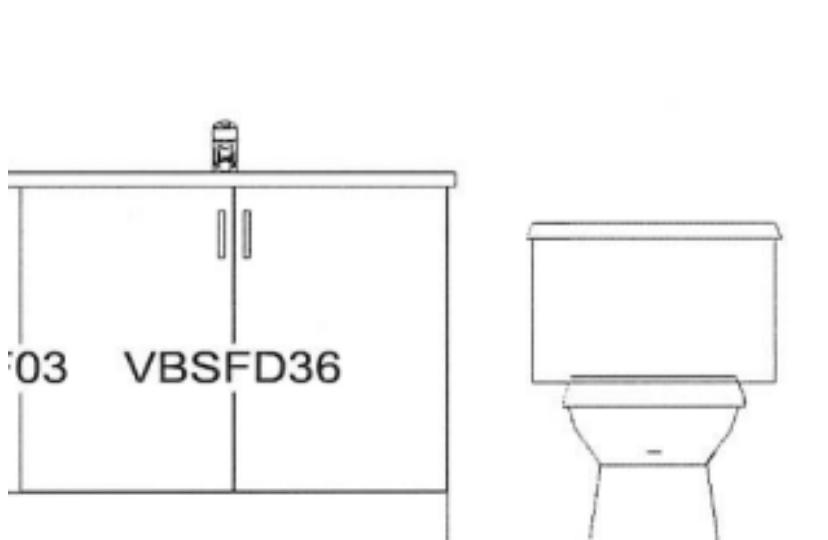
CABINET – Brookfield (shaker) – Birch – Ebony

FLOORING – Euro Tile – Pasha Davenport in Ash 941 – Bone Grout

SHOWER – Euro Tile Prissmacer, snow white grout

COUNTERTOP: Upgraded Zenith Quartz – Nordic White

HARDWARE – 9243-1BPN-P



MASTER ENSUITE



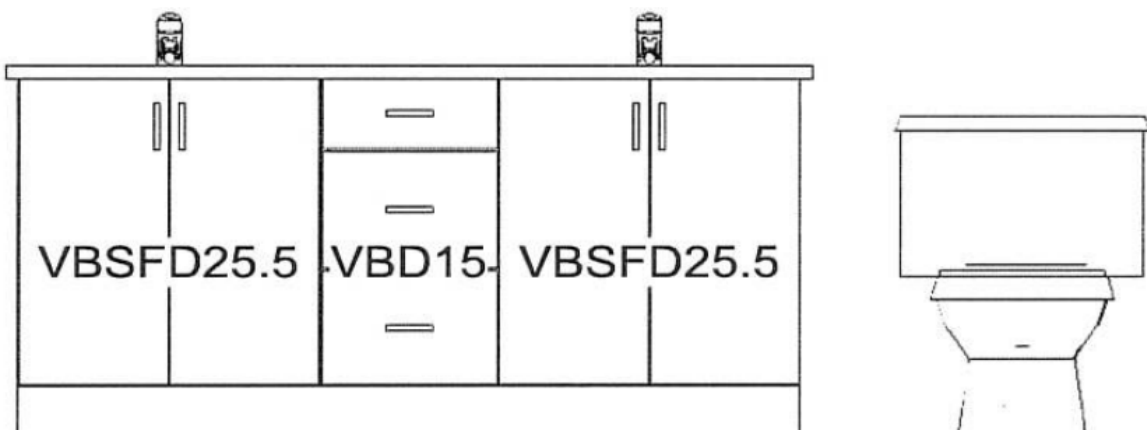
CABINET – Urban (Slab) – Birch – Flagstone Stain

COUNTERTOP – Upgraded Quartz Zenith – Calacatta Gold

FLOOR – Ceratec – Gaia Taupe – Blizzard Grout

WALL TILE – Euro Tile – Soho Halo Gray – Bone Grout

HARDWARE – 9243-1BPN-P



Despite the best efforts of Glenview Homes and its affiliates, officers, directors, employees or agents (collectively “we”, “us” or “our” as circumstances warrant) to provide accurate information, including but not limited to prices and availability of homes or lots, it is regrettably not possible to ensure that all information contained in this display is correct. We do not warrant the accuracy and completeness of information, text, graphics or items contained in this display. All dimensions provided are approximate and sizes and specifications are subject to change without notice. E.&O.E. THIS DISPLAY IS PROVIDED ‘AS IS’ WITHOUT WARRANTY OF ANY KIND, EITHER EXPRESSED OR IMPLIED, WARRANTIES OF MERCHANTABILITY, FITNESS FOR A PARTICULAR PURPOSE, OR NON-INFRINGEMENT. The information and specifications contained in this display are subject to change without notice and represent no commitment on our part in the future.

FOYER/ MUDROOM / POWDER ROOM



FLOOR TILE- White (Ceratec Bien Paros) 12x24" – Bone Grout

CARPET



BEAULIEU SPARTACUS